



Jocko Valley Bull Sale

Saturday • April 14, 2012 • 1:00 pm

Missoula Livestock Auction • Missoula, Montana

Selling

50 Registered Angus
Yearling Bulls

10 Registered First Calf
Heifer Pairs

10 Commercial
Pairs



32526 McLeod Road • Arlee, MT 59821

Marvin Rehbein, Owner

cell (406) 546-4687 home (406) 726-3839

Bill Talbert, Herd Manager

home (406) 726-0182



32526 McLeod Road • Arlee, MT 59821

Marvin Rehbein, Owner
cell (406) 546-4687 home (406) 726-3839

Bill Talbert, Herd Manager
home (406) 726-0182

Dear Friends and Fellow Cattlemen,

I would like to personally invite you to our upcoming Bull Sale on April 14th at 1:00 pm at Missoula Livestock Auction, Missoula, MT. The bulls are currently being fed at the Broken O Ranch in Augusta. Feel free to visit the bulls up until April 11th when they will be moved to Missoula. Should you have any questions prior to the sale do not hesitate to contact me.

Being in the cattle business is truly something that I love. In 2010 I had a dispersal sale for health reasons, however with proper diet and exercise I have since been given a clean bill of health. I have always had a great appreciation for the importance and value of a cow and her maternal influence to keep a herd profitable. I have spent a lot of time putting together what I feel are some of the great maternal lines in our breed and those cow families will be represented through the sale.

We are lucky to have Leo McDonnell as a friend and he has been working hard to help us prepare for this sale. Leo and Russ Pepper went through our herd and picked the best of the best for this sale, so we know you are going to be pleased with these bulls. We would like to thank them for their help and friendship over the years.

We would also like to thank Will Malcom with Sleeping Giant Genetics, for his help in getting good genetics back to the ET program.

In addition to the bulls and registered heifer pairs, we will also have a pen of Angus Commercial Pairs at the sale that will be ready to be bred in the spring.

We would like to thank you in advance for taking time out of your busy schedules to come visit us, and to thank those who have bought cattle from us in the past. We appreciate all your feedback on the cattle and look forward to working with you in the future.

Sincerely,
Marvin Rehbein

Jocko Valley Bull Sale

Saturday • April 14, 2012 • 1:00 pm

Missoula Livestock Auction • Missoula, Montana

Lunch will be provided at noon

Selling

50 Registered Angus
Yearling Bulls

10 Registered First Calf
Heifer Pairs

10 Commercial
Pairs

Auctioneer

Leo McDonnell (406) 780-0176

Sale Day Phone

(406) 728-3052

Terms and Conditions

Cattle sell under the terms and conditions recommended by the American Angus Association.

Terms

Cash on sale day, unless prior arrangements have been made. Announcements made the day of the sale take precedence over all printed information.

Sale location

Missoula Livestock Exchange, 8598 Robbins Road, Missoula.
Located at the junction of I-90 and Highway 93 at Exit 96.

Accommodations

Days Inn (406) 721-9776

C'mon Inn (406) 543-4600

Best Western Grant Creek Inn (406) 543-0700

Hawthorne Suite (888) 982-2601

Herd Health

All bulls have had 2 rounds of fall and winter vaccines including 2 rounds of foot rot vaccine. All bulls are semen tested and carcass ultrasounded, scrotal circumferences and ultrasound data will be available sale data. Bulls are BVD-PI tested free.



Marvin & Mary Ann Rehbein



Bill and Maureen Talbert



Erika Daniel and daughters

1**JVC EMBLAZON X092**

Bull

+ 16766210

tattoo X092

calved 9/11/10

D H D TRAVELER 6807 #

Q A STRAVELER 23-4 #

O C C EMBLAZON 854E #

BEMINDFUL MAID D H D 0807 #

DIXIE ERICA OF C H 1019

PBC 707 1M F0203 #

DIXIE ERICA OF C H 615

S A V 8180 TRAVELER 004 #

SITZ TRAVELER 8180 #

DB LUCY 163

BOYD FOREVER LADY 8003

BASIN LUCY 178E

BASIN MAX 602C #

BASIN LUCY 855A #

Birth Wt

78

205 Wt

na

CED	BW	WW	YW	Milk	Marb	REA
I+7	I+1.9	I+53	I+95	I+21	I+.07	I+.26
	\$W	\$F		\$G		\$B
	32.15	34.60		10.77		34.12

Embryo Transplant**2****JVC EMBLAZON X093**

Bull

+ 16766212

tattoo X093

calved 9/16/10

D H D TRAVELER 6807 #

Q A STRAVELER 23-4 #

O C C EMBLAZON 854E #

BEMINDFUL MAID D H D 0807 #

DIXIE ERICA OF C H 1019

PBC 707 1M F0203 #

DIXIE ERICA OF C H 615

S A V 8180 TRAVELER 004 #

SITZ TRAVELER 8180 #

DB LUCY 163

BOYD FOREVER LADY 8003

BASIN LUCY 178E

BASIN MAX 602C #

BASIN LUCY 855A #

Birth Wt

88

205 Wt

na

CED	BW	WW	YW	Milk	Marb	REA
I+7	I+1.9	I+53	I+95	I+21	I+.07	I+.26
	\$W	\$F		\$G		\$B
	32.15	34.60		10.77		34.12

Embryo Transplant**3****JVC EMBLAZON 135**

Bull

17155387

tattoo 135

calved 2/14/11

O C C EMBLAZON 854E #

D H D TRAVELER 6807 #

C C A EMBLAZON 702

DIXIE ERICA OF C H 1019

LIMESTONE BLACKCAP R128

HYLINE RIGHT TIME 338 #

THREETREES BLACKCAP 3337

SUMMITCREST HIGH PRIME 0H29 #

GARDENS PRIME TIME #

BT RUBY 15P

SUMMITCREST MISSIE 2F55

BT RUBY 625M #

SITZ ALLIANCE 8199

BT RUBY 46J

Birth Wt

83

205 Wt

578

CED	BW	WW	YW	Milk	Marb	REA
+9	+0.6	+43	+85	+22	I+.39	I+.15
	\$W	\$F		\$G		\$B
	25.56	28.01		27.60		51.50

Coleman-Regis-904



4

JVC REGIS I 27

Bull 17155386 tattoo 127 calved 2/7/11

SAV FINAL ANSWER 0035 #
COLEMAN REGIS 904
 COLEMAN DONNA 714

SITZ TRAVELER 8180 #
 SAV EMULOUS 8145
 CONNEALY ONWARD #
 COLEMAN DONNA 386
 EMULATION N BAR 5522 #
 N BAR PRIMROSE 2424
 GA R PRECISION 1680 #
 KMK DONNA J311

Birth Wt	86
205 Wt	672

CED	BW	WW	YW	Milk	Marb	REA
+4	+2.6	+51	+88	+28	1+.28	1+.29
	\$W	\$F		\$G		\$B
	28.74	27.91		23.10		46.99



5

JVC REGIS I 120

Bull 17176867 tattoo 1120 calved 4/1/11

SAV FINAL ANSWER 0035 #
COLEMAN REGIS 904
 COLEMAN DONNA 714

SITZ TRAVELER 8180 #
 SAV EMULOUS 8145
 CONNEALY ONWARD #
 COLEMAN DONNA 386

O C C EMBLAZON 854E #
COLEMAN EVERELDA ENTENSE 959
 COLEMAN EVERELDA ENTENSE 455

D H D TRAVELER 6807 #
 DIXIE ERICA OF C H 1019
 GA R EXPECTATION 4915 #
 SITZ EVERELDA ENTENSE 4789

Birth Wt	76
205 Wt	676

CED	BW	WW	YW	Milk	Marb	REA
+9	+0.7	+56	+94	+26	na	na
	\$W	\$F		\$G		\$B
	33.84	32.25		na		na

6**JVC REGIS 1122**

Bull

17176866

tattoo 1122

calved 4/2/11

SAV FINAL ANSWER 0035 #

SITZ TRAVELER 8180 #

COLEMAN REGIS 904

SAV EMULOUS 8145

COLEMAN DONNA 714

CONNEALY ONWARD #
COLEMAN DONNA 386

O C C EMBLAZON 854E #

D H D TRAVELER 6807 #

COLEMAN EVERELDA ENTENSE 957

DIXIE ERICA OF C H 1019

COLEMAN EVERELDA ENTENSE 455

GA R EXPECTATION 4915 #

SITZ EVERELDA ENTENSE 4789

Birth Wt

80

205 Wt

640

CED	BW	WW	YW	Milk	Marb	REA
+8	+1.2	+53	+91	+25	na	na
\$W	\$F	\$G	\$B			
31.76	30.27	na	na			

**7****JVC ONWARD 142**

Bull

17029432

tattoo 142

calved 2/20/11

CONNEALY LEAD ON #

CONNEALY LEADTIME #

CONNEALY ONWARD #

ELIGENCE PLUS OF CONANGA

ALTUNE OF CONANGA 6104

GA R TRAVELER 1489 #

AVALON 1418 OF CONANGA 6276

N BAR EMULATION EXT #

EMULATION N BAR 5522 #

JVC MAJESTY 853 T766

N BAR PRIMROSE 2424

MAJESTY 853 OF 5439 4465

IDEAL 5439 OF 1418 2455 #

IDEAL 4465 OF 6807 4286

Birth Wt

90

205 Wt

762

CED	BW	WW	YW	Milk	Marb	REA
+4	+2.9	+61	+114	+29	+1.28	+1.56
\$W	\$F	\$G	\$B			
26.20	52.69	20.30	71.28			

8**JVC TRAVELER 197**

Bull

17174365

tattoo 197

calved 3/20/11

D H D TRAVELER 6807 #

QA S TRAVELER 23-4 #

GARRET'S TRAVELER 457G

BEMINDFUL MAID D H D 0807 #

GARRET FOREVER LADY 457

BONVIEW NEW DESIGN 1407 #

BOYD FOREVER LADY 8003

AUTUMN OAKS SUPER STAR 302

SUMMITCREST SEARS STAR POWER

JVC HEROINE 2706 9196

S C C MS EXT 032

FALCON HEROINE 2706

SAV 8180 TRAVELER 004 #

VERMILION JP LASS 4035 #

Birth Wt

72

205 Wt

656

CED	BW	WW	YW	Milk	Marb	REA
+8	+0.9	+41	+79	+24	+1.20	+1.24
\$W	\$F	\$G	\$B			
26.23	22.57	20.48	42.83			

9

JVC GAME DAY 118

Bull 17159243

tattoo 118

calved 1/31/11

BOYD NEW DAY 8005 #

AA R NEW TREND #

GDAR GAME DAY 449

SV F FOREVER LADY 57D

G D A R MISS WIX 474 #

TEHAMA BAND 207 #
G D A R MISS WIX 749

D H D TRAVELER 6807 #

Q A S TRAVELER 23-4 #

COLEMAN EVERELDA ENTENSE 933

BEMINDFUL MAID D H D 0807 #

COLEMAN EVERELDA ENTENSE 4107

TWIN VALLEY PRECISION E161 #
SITZ EVERELDA ENTENSE 4789

Birth Wt
80

205 Wt
714

CED	BW	WW	YW	Milk	Marb	REA
+6	+1.6	+50	+95	+22	1+.28	1+.34
	\$W	\$F	\$G	\$B		
	26.40	35.87	25.39	41.19		

10

JVC HOOVER DAM 121

Bull 17161334

tattoo 121

calved 2/2/11

SYDGEN C C & 7

S A F CONNECTION #

HOOVER DAM

SYDGEN FOREVER LADY 4087

ERICA OF ELLSTON C124 #

TC GRIDIRON 258 #

ERICA OF ELLSTON V65

S S OBJECTIVE T510 0T26 #

S S TRAVELER 6807 T510 #

RIVER HILLS EXT W248

S S MISS RITA R011 7R8

RIVER HILLS EXT TRAVLR R452

BR MIDLAND #

G A R EXT 755 #

Birth Wt
78

205 Wt
626

CED	BW	WW	YW	Milk	Marb	REA
+9	+1.6	+51	+102	+26	1+.60	1+.60
	\$W	\$F	\$G	\$B		
	25.25	43.27	39.33	59.57		



11

JVC ONWARD 117

Bull 17155385

tattoo 117

calved 1/23/11

CONNEALY ONWARD #

CONNEALY LEAD ON #

JVC ONWARD 8136

ALTUNE OF CONANGA 6104

IDEAL 2434 OF 7407 7412

IDEAL 7407 OF 1418 4465

IDEAL 7412 OF 1418 4465

N BAR EMULATION EXT #

EMULATION N BAR 5522 #

JVC MISS 055 EXT 8138

N BAR PRIMROSE 2424

CAR MISS 055 #

GARDENS PRIME TIME #

UT MISS 3987

Birth Wt
88

205 Wt
727

CED	BW	WW	YW	Milk	Marb	REA
-1	+4.5	+60	+113	+24	1+.21	1-.06
	\$W	\$F	\$G	\$B		
	21.05	51.97	11.94	46.27		

12

JVC ONWARD 153

Bull 17155388

tattoo 153

calved 2/24/11

CONNEALY ONWARD #

CONNEALY LEAD ON #

JVC ONWARD 8136

ALTUNE OF CONANGA 6104

IDEAL 2434 OF 7407 7412

IDEAL 7407 OF 1418 4465
IDEAL 7412 OF 1418 4465

TC GRID TOPPER 355 #

GA R GRID MAKER #
TC PRIDE 8067 #

BAF NEW BARBARA 3013

BONVIEW NEW DESIGN 1407 #
G F EDINA BARBARA 0818-486

G F NEW BARBARA 249-155

Birth Wt
81

205 Wt
733

CED	BW	WW	YW	Milk	Marb	REA
+5	+2.7	+66	+124	+22	+1.21	+1.46
\$W		\$F		\$G		\$B
25.53		62.41		20.37		58.37

13

JVC ONWARD 8136-161

Bull 17029286

tattoo 161

calved 2/27/11

CONNEALY ONWARD #

CONNEALY LEAD ON #

JVC ONWARD 8136

ALTUNE OF CONANGA 6104

IDEAL 2434 OF 7407 7412

IDEAL 7407 OF 1418 4465
IDEAL 7412 OF 1418 4465

GA R PRECISION 1680 #

TEHAMA BANDO 155 #
9J9 GA R 856

I C C BLACKCAP 6310

B/R NEW DESIGN 036 #
GA R EXT 2114

NER ICC BLACKCAP SF 0192

Birth Wt
88

205 Wt
664

CED	BW	WW	YW	Milk	Marb	REA
+6	+3.0	+53	+103	+23	+1.33	+1.38
\$W		\$F		\$G		\$B
22.72		43.52		25.86		57.11

14

JVC ONWARD 199

Bull 17174366

tattoo 199

calved 3/20/11

CONNEALY ONWARD #

CONNEALY LEAD ON #

JVC ONWARD 8136

ALTUNE OF CONANGA 6104

IDEAL 2434 OF 7407 7412

IDEAL 7407 OF 1418 4465
IDEAL 7412 OF 1418 4465

SUMMITCREST STARDOM 1S54

GT SHEAR FORCE
SUMMITCREST PRINCESS 0N70

JVC BEAUTY 7511 9160

RIVERBEND MILE HIGH 3718
DIAMOND BEAUTY 345R #

DIAMOND BEAUTY 7511

Birth Wt
74

205 Wt
731

CED	BW	WW	YW	Milk	Marb	REA
+8	+1.5	+59	+105	+27	+1.15	-1.04
\$W		\$F		\$G		\$B
31.19		43.15		16.67		27.48

15

JVC BEXTOR 133

Bull 17180552

tattoo 133

calved 2/12/11

C R A BEXTOR 872 5205 608 #

B A R EXT TRAVELER 205 #

RIVERBEND BEXTOR W045

CRA LADY JAYE 608 498 S EASY

RIVERBEND BLACKCAP 881T

RITO 2 878 OF 2536 BVND 878 #
DAVIS BLACKCAP 2156

BR MIDLAND #

TWIN VALLEY PRECISION E161 #
BR ROYAL LASS 7036-19

WOODLAWN MARY 4502 M M C L

N BAR EMULATION EXT #
M B 6807 PLEASANT MARY 3635

M B PLEASANT MARY EXT 5002

Birth Wt
78

205 Wt
479

CED	BW	WW	YW	Milk	Marb	REA
+9	+0.8	+33	+74	+19	+1.36	+1.23
\$W		\$F		\$G		\$B
19.99		20.63		27.78		35.74

S-A-V-Final-Answer-0035



**Reference
Sire**

16 JVC FINAL ANSWER 105

Bull 17159187 tattoo 105 calved 12/23/10

SITZ TRAVELER 8180 #
S A V FINAL ANSWER 0035 #
SAV EMULOUS 8145

G D A R TRAVELER 71 #
SITZ EVERELDA ENTENSE 1137
BONVIEW BANDO 598 #
SAV SKY EMULOUS 2124

BONVIEW NEW DESIGN 878 #
T B A SHIRLEY 613
DE KAP EXT SHIRLEY 195

B/R NEW DESIGN 036 #
BONVIEW GAMMER 85
N BAR EMULATION EXT #
DE KAPT NT SHIRLEY 403

Birth Wt
106
205 Wt

CED	BW	WW	YW	Milk	Marb	REA
1+9	1+0.5	1+52	1+89	1+24	na	na
	\$W	\$F		\$G		\$B
	32.28	28.56		na		na



17

17 JVC FINAL ANSWER 106

Bull 17159183 tattoo 106 calved 12/23/10

SITZ TRAVELER 8180 #
S A V FINAL ANSWER 0035 #
SAV EMULOUS 8145

G D A R TRAVELER 71 #
SITZ EVERELDA ENTENSE 1137
BONVIEW BANDO 598 #
SAV SKY EMULOUS 2124

EXAR NEW DESIGN 4865
MONARCH MISS DINAH T331
GREEN GARDEN DINAH C261 SI

BONVIEW NEW DESIGN 1407 #
L C R D/D PRECISION 115
GARDENS HIGHMARK #
GARDEN DINAH 4262 S2

Birth Wt
72
205 Wt

CED	BW	WW	YW	Milk	Marb	REA
1+7	1+1.2	1+49	1+92	1+24	1+.54	1+.40
	\$W	\$F		\$G		\$B
	27.77	33.02		30.29		65.75

18

JVC FINAL ANSWER 187

Bull

17174363

tattoo 187

calved 3/13/11

SITZ TRAVELER 8180 #

S A V FINAL ANSWER 0035 #

SAV EMULOUS 8145

G D A R TRAVELER 71 #

SITZ EVERELDA ENTENSE 1137

BONVIEW BANDO 598 #

SAV SKY EMULOUS 2124

N BAR EMULATION EXT #

JVC COUNTESS 235 V987

BALDRIDGE COUNTESS 235

EMULATION N BAR 5522 #

N BAR PRIMROSE 2424

CONNEALY DATELINE #

4 M COUNTESS DOLL X46

Birth Wt
68

205 Wt
602

CED	BW	WW	YW	Milk	Marb	REA
+12	-0.8	+48	+85	+19	1+.26	1+.20
\$W		\$F		\$G		\$B
30.59		25.98		19.21		36.19

19

JVC EMBLAZON 123

Bull

17187847

tattoo 123

calved 2/3/11

SITZ RLS EMBLAZON 961P

SITZ EMBLAZON 9598

SITZ EISA EVERGREEN 176 #

O C C EMBLAZON 854E #

R L S EISA EVERGREEN 5018

SITZ NEW DESIGN 349M #

SITZ EISA EVERGREEN 3674

TWINVALLEY PRECISION E161 #

RIVER HILLS PALACE P68

SUMMITCREST LUCY H247

GA R PRECISION 1680 #

W C C BLACKCAP C9

B/R NEW DESIGN 323 #

SUMMITCREST LUCY F272

Birth Wt
87

205 Wt
504

CED	BW	WW	YW	Milk	Marb	REA
+4	+2.9	+33	+82	+18	1+.36	1+.19
\$W		\$F		\$G		\$B
12.64		28.94		28.56		35.97

20

JVC EMBLAZON 174

Bull

17178187

tattoo 174

calved 3/5/11

SITZ RLS EMBLAZON 961P

SITZ EMBLAZON 9598

SITZ EISA EVERGREEN 176 #

O C C EMBLAZON 854E #

R L S EISA EVERGREEN 5018

SITZ NEW DESIGN 349M #

SITZ EISA EVERGREEN 3674

TWINVALLEY PRECISION E161 #

RIVER HILLS RACHEL P94

SV F RACHEL 1661

GA R PRECISION 1680 #

W C C BLACKCAP C9

SITZ TRAVELER 8180 #

SV F RACHEL 139D

Birth Wt
85

205 Wt
559

CED	BW	WW	YW	Milk	Marb	REA
+4	+3.0	+40	+84	+21	1+.29	1+.33
\$W		\$F		\$G		\$B
18.76		28.19		25.59		36.84

Sitz-Emblazon-9598



21**JVC BANDO 180**

Bull 17174362 tattoo 180 calved 3/9/11

SUMMITCREST 598 BANDO 11R2

S A F 598 BANDO 5175 #
SUMMITCREST PRIMROSE 2J02**SUMMITCREST BANDO 11R2 T226**

SUMMITCREST LUCY M052

GARDENS PRIME TIME #
SUMMITCREST LUCY K183

H A IMAGE MAKER 0415 #

HERO 6267 OF R R 2418 #
H A RITO BLACKCAP 9038**SCR IDEAL GIRL 723**

SUNRISE IDEAL GIRL L136

C A CONNECTION 8E8 225
SUNRISE MISS HUSKER 130Birth Wt
88205 Wt
695

CED	BW	WW	YW	Milk	Marb	REA
+1	+3.7	+57	+97	+23	1+.23	1+.03
	\$W	\$F	\$G	\$B		
	26.78	35.09	18.35	42.97		

22**JVC BANDO 192**

Bull 17174364 tattoo 192 calved 3/18/11

SUMMITCREST 598 BANDO 11R2

S A F 598 BANDO 5175 #
SUMMITCREST PRIMROSE 2J02**SUMMITCREST BANDO 11R2 T226**

SUMMITCREST LUCY M052

GARDENS PRIME TIME #
SUMMITCREST LUCY K183

CONNEALY FRONTLINE #

CONNEALY DATELINE #
PLEASANT PILL OF CONANGA #**SB HENDRETTA PRIDE KMK L12**

SITZ HENRIETTA PRIDE 501

G D A R RAINMAKER 340 #
SITZ HENRIETTA PRIDE 1219Birth Wt
94205 Wt
637

CED	BW	WW	YW	Milk	Marb	REA
+1	+4.1	+44	+76	+19	1+.20	1-.11
	\$W	\$F	\$G	\$B		
	21.85	18.34	18.35	36.06		

23**JVC BANDO 1113**

Bull 17005004 tattoo 1113 calved 3/27/11

SUMMITCREST 598 BANDO 11R2

S A F 598 BANDO 5175 #
SUMMITCREST PRIMROSE 2J02**SUMMITCREST BANDO 11R2 T226**

SUMMITCREST LUCY M052

GARDENS PRIME TIME #
SUMMITCREST LUCY K183

SINCLAIR NET PRESENT VALUE #

N BAR PRIME TIME D806 #
IDEAL 4465 OF 6807 4286**V A R RITA 6132**

G A R NEW DESIGN 1440

B/R NEW DESIGN 036 #
G A R EXT 614Birth Wt
86205 Wt
621

CED	BW	WW	YW	Milk	Marb	REA
+6	+2.2	+46	+85	+22	1+.56	1+.17
	\$W	\$F	\$G	\$B		
	25.38	26.79	30.25	56.07		

24**JVC CONTRACT 182**

Bull 17178199 tattoo 182 calved 3/10/11

SYDGEN CONTACT

S A F CONNECTION #
S A F FOREVER LADY 0020**SYDGEN CONTRACT 9410**

BASIN LADY M017 #

VERMILION PAYWEIGHT J847 #
BASIN LADY 874K

G A R RETAIL PRODUCT #

G A R PRECISION 1680 #
G A R EXT 4927**BALDRIDGE FOREVER LADY S186**

BALDRIDGE FOREVER LADY N620

CONNEALY FRONTLINE #
BALDRIDGE FOREVER LADY 705JBirth Wt
66205 Wt
539

CED	BW	WW	YW	Milk	Marb	REA
+11	-0.7	+38	+82	+26	1+.33	1+.31
	\$W	\$F	\$G	\$B		
	24.62	26.89	25.72	50.38		

TC-Franklin-619



**Reference
Sire**

25

JVC FRANKLIN 158

Bull 17178145

tattoo 158 calved 2/26/11

TC TOTAL 410 #

BONVIEW NEW DESIGN 208 #
TC ERICA EILEEN 2047

TC FRANKLIN 619

TC MARCIA 1069 #

CONNEALY FOREFRONT #
TC MARCIA 7105

SAV PATHFINDER 3134

SA F 598 BANDO 5175 #
SAV EMBLYNETTE 8214 #

JVC BRUSETT 636 995

SCR BRUSETT 636

W C C SPECIAL DESIGN L309 #
S C R BRUSETT S210

Birth Wt	84
205 Wt	728

CED	BW	WW	YW	Milk	Marb	REA
+2	+2.7	+61	+102	+24	1+.37	1+.16
	\$W	\$F		\$G		\$B
	30.77	38.90		26.99		55.91

26

JVC FRANKLIN 176

Bull 17178147

tattoo 176 calved 3/6/11

TC TOTAL 410 #

BONVIEW NEW DESIGN 208 #
TC ERICA EILEEN 2047

TC FRANKLIN 619

TC MARCIA 1069 #

CONNEALY FOREFRONT #
TC MARCIA 7105

SUMMITCREST STARDOM 1S54

GT SHEAR FORCE
SUMMITCREST PRINCESS 0N70

JVC PRIDE 744 934

JVC FOCUS PRIDE 744

FALCON FOCUS 368N
BALDRIDGE PRIDE 129

Birth Wt	74
205 Wt	670

CED	BW	WW	YW	Milk	Marb	REA
+8	+0.9	+53	+91	+27	1+.25	1+.35
	\$W	\$F		\$G		\$B
	32.41	30.27		24.02		53.09

27

JVC TRAVELER Y127

Bull + 17174997

tattoo Y127 calved 2/22/11

Q A S TRAVELER 23-4 #

BAND 234 OF IDEAL 3163 #
Q A S BLACKBIRD EVE 601 I

D H D TRAVELER 6807 #

BEMINDFUL MAID D H D 0807 #

PBC 707 1M F0203 #
BEMINDFUL MAID OF R R 1079

N BAR EMULATION EXT #

EMULATION N BAR 5522 #
N BAR PRIMROSE 2424

BOHI LADY 1165

IDEAL 4465 OF 6807 4286

D H D TRAVELER 6807 #
E E 4286 OF IDEAL 2240 1254

Birth Wt	70
205 Wt	583

CED	BW	WW	YW	Milk	Marb	REA
1+8	1+0.8	1+41	1+80	1+19	1+.09	1+.18
	\$W	\$F		\$G		\$B
	26.73	23.60		15.78		38.23

Embryo Transplant. 622 lb actual weaning weight

BOHI-Lady-I-165



Reference Dam

Dam of Lots 27 - 30

28

JVC TRAVELER Y133

Bull + 17174998 tattoo Y133 calved 2/24/11

QA STRAVELER 23-4 #
D H D TRAVELER 6807 #
BEMINDFUL MAID D H D 0807 #

BAND 234 OF IDEAL 3163 #
QA S BLACKBIRD EVE 601 I
PBC 707 1M F0203 #
BEMINDFUL MAID OF R R 1079

N BAR EMULATION EXT #
BOHI LADY I165
IDEAL 4465 OF 6807 4286

EMULATION N BAR 5522 #
N BAR PRIMROSE 2424
D H D TRAVELER 6807 #
E E 4286 OF IDEAL 2240 1254

Birth Wt
72
205 Wt
628

CED	BW	WW	YW	Milk	Marb	REA
I+8	I+0.8	I+41	I+80	I+19	I+.15	I+.31
\$W	\$F	\$G	\$B			
26.73	23.60	17.82	50.14			

Embryo Transplant. 726 lb actual weaning weight

29

JVC PAXTON Y1501

Bull + 17163311 tattoo Y1501 calved 2/7/11

O C C FOCUS 813F
O C C PAXTON 730P
O C C BLACKBIRD 736K

BASIN RAINMAKER 654X #
DIXIE ERICA OF C H 1019
O C C GREAT PLAINS 943G #
O C C BLACKBIRD 824G

N BAR EMULATION EXT #
BOHI LADY I165
IDEAL 4465 OF 6807 4286

EMULATION N BAR 5522 #
N BAR PRIMROSE 2424
D H D TRAVELER 6807 #
E E 4286 OF IDEAL 2240 1254

Birth Wt
70
205 Wt
600

CED	BW	WW	YW	Milk	Marb	REA
I+8	I-0.3	I+46	I+82	I+19	I+.27	I+.53
\$W	\$F	\$G	\$B			
36.79	23.66	23.87	56.19			

Embryo Transplant. 616 lb actual weaning weight

30

JVC PAXTON Y151

Bull + 17151990 tattoo Y151 calved 2/10/11

O C C FOCUS 813F
O C C PAXTON 730P
O C C BLACKBIRD 736K

BASIN RAINMAKER 654X #
DIXIE ERICA OF C H 1019
O C C GREAT PLAINS 943G #
O C C BLACKBIRD 824G

N BAR EMULATION EXT #
BOHI LADY I165
IDEAL 4465 OF 6807 4286

EMULATION N BAR 5522 #
N BAR PRIMROSE 2424
D H D TRAVELER 6807 #
E E 4286 OF IDEAL 2240 1254

Birth Wt
88
205 Wt
752

CED	BW	WW	YW	Milk	Marb	REA
I+8	I-0.4	I+46	I+83	I+19	I+.16	I+.48
\$W	\$F	\$G	\$B			
36.70	24.70	19.19	49.81			

Embryo Transplant.

Boyd-Forever-Lady-71-20



**Reference
Dam**

Dam of Lots 31 - 3

The famous Jocko Valley foundation Forever Lady donor who is a full sister to the Genex/CRI Pathfinder Sire Boyd New Day 8005 and other famous females including the \$90,000 dam of the Genex/CRI Pathfinder Sire SAV 8180 Traveler 004. This cow herself produced a long line of top sellers including the Genex/ CRI sire Boyd Beef Maker 3069 who was the featured Lot 1 top-valued bull of the 2004 Boyd Bull Sale, Boyd Heritage 6078 who was the 2008 National Western Angus Sale Grand Champion and \$55,000 top seller also named the 2007 North American International Reserve Grand Champion, Boyd Captain 2067 who was the \$20,000 top-selling bull of the 2003 Boyd Bull Sale to Stevenson Angus Ranch, the \$80,000 topselling bred heifer of the 2007 Boyd Breeders Cup Sale to KiamichiLink and Sonrise, the \$50,000 top-selling bred heifer of the Sterling Hunter Dispersal and the \$70,000 valued top-selling lead-off bred heifer of the Mountain Meadow Inaugural Sale, among others. This famous female has a progeny weaning ratio of 114 and a progeny yearling ratio of 108 on four natural calves along with a progeny ribeye ratio of 102 on 59 head with 21 daughters posting a collective progeny weaning ratio of 102. This cow sold one-half interest for \$112,500 for a \$225,000 valuation as the featured Lot 1 top-selling cow of the 2003 Boyd Fall Sale and also served as a donor in the Bohi herd. The legendary dam of this cow is the All-American Grand Champion Cow SVF Forever Lady 57D who generated more than \$2.5 million in progeny sales

31

JVC PIONEER Y152

Bull + 17159317

tattoo Y152

calved 2/11/11

SAV FINAL ANSWER 0035 #

SITZ TRAVELER 8180 #
SAV EMULOUS 8145

S A V PIONEER 7301

SAV BLACKBIRD 5297

BOYD NEW DAY 8005 #
SAV BLACKBIRD 1082

AA R NEW TREND #

V D A R SHOSHONE 548 #
DONNA A A R 74

BOYD FOREVER LADY 7120

SV F FOREVER LADY 57D

LEACHMAN RIGHTTIME #
SV F FOREVER LADY 1128

Birth Wt

75

205 Wt

652

CED	BW	WW	YW	Milk	Marb	REA
I+4	I+3.5	I+55	I+104	I+32	I+.29	I+.44
\$W	\$F	\$G	\$B			
30.05	43.78	21.01	55.14			

Embryo Transplant. 660 lb actual weaning weight

32

JVC PENDLETON Y153

Bull + 17159296

tattoo Y153

calved 2/12/11

SAV FINAL ANSWER 0035 #

SITZ TRAVELER 8180 #
SAV EMULOUS 8145

HARB PENDLETON 765 J H

H A R B BLACK LADY 375 J H #

H A R B HIGH PLAINS 975 JH #
H A R B BLACK LADY 073 J H #

AA R NEW TREND #

V D A R SHOSHONE 548 #
DONNA A A R 74

BOYD FOREVER LADY 7120

SV F FOREVER LADY 57D

LEACHMAN RIGHTTIME #
SV F FOREVER LADY 1128

Birth Wt

80

205 Wt

656

CED	BW	WW	YW	Milk	Marb	REA
I+7	I+2.7	I+54	I+101	I+35	I+.28	I+.26
\$W	\$F	\$G	\$B			
31.32	40.82	14.35	58.06			

Embryo Transplant. 662 lb actual weaning weight

33**JVC PENDLETON Y157**

Bull + 17159298

tattoo Y157

calved 2/14/11

SAV FINAL ANSWER 0035 #

SITZ TRAVELER 8180 #

HARB PENDLETON 765 J H

SAV EMULOUS 8145

HA R B BLACK LADY 375 J H #

HA R B HIGH PLAINS 975 JH #

HA R B BLACK LADY 073 J H #

AA R NEW TREND #

V D A R SHOSHONE 548 #

BOYD FOREVER LADY 7120

DONNA A A R 74

SV F FOREVER LADY 57D

LEACHMAN RIGHTTIME #

SV F FOREVER LADY 1128

Birth Wt
80205 Wt
708

CED	BW	WW	YW	Milk	Marb	REA
1+7	1+2.7	1+54	1+101	1+35	1+.20	1+.25
\$W	\$F	\$G	\$B			
31.32	40.82	8.81	55.86			

Embryo Transplant. 710 lb actual weaning weight**34****JVC UPWARD Y155**

Bull + 17162455

tattoo Y155

calved 2/13/11

CONNEALY ONWARD #

CONNEALY LEAD ON #

SITZ UPWARD 307R #

ALTUNE OF CONANGA 6104

SITZ HENRIETTA PRIDE 81M

SITZ VALUE 7097 #

SITZ HENRIETTA PRIDE 1370

GARDENS PRIMETIME #

R R TRAVELER 5204 #

CAR MISS 055 #

GREEN GARDEN SUSIE 1246 SI #

UT MISS 3987

GA R EXAMPLE 3204 #

UT MISS 1416 #

Birth Wt
90205 Wt
783

CED	BW	WW	YW	Milk	Marb	REA
1+2	1+3.3	1+60	1+113	1+37	1+.35	1+.44
\$W	\$F	\$G	\$B			
32.12	51.97	20.84	71.55			

Embryo Transplant. 788 lb actual weaning weight**35****JVC EMULATION EXT Y156**

Bull + 17161118

tattoo Y156

calved 2/14/11

EMULATION N BAR 5522 #

EMULATION 31 #

N BAR EMULATION EXT #

ANKONY 8F78 LASS 8F275

N BAR PRIMROSE 2424

EMULATION 31 #

PRIMROSE N BAR 9962

GARDENS PRIMETIME #

R R TRAVELER 5204 #

CAR MISS 055 #

GREEN GARDEN SUSIE 1246 SI #

UT MISS 3987

GA R EXAMPLE 3204 #

UT MISS 1416 #

Birth Wt
78205 Wt
625

CED	BW	WW	YW	Milk	Marb	REA
1+2	1+3.0	1+45	1+83	1+25	1+.31	1+.03
\$W	\$F	\$G	\$B			
27.87	25.10	15.63	45.17			

Embryo Transplant. 626 lb actual weaning weight**36****JVC EMULATION EXT Y158**

Bull + 17161117

tattoo Y158

calved 2/18/11

EMULATION N BAR 5522 #

EMULATION 31 #

N BAR EMULATION EXT #

ANKONY 8F78 LASS 8F275

N BAR PRIMROSE 2424

EMULATION 31 #

PRIMROSE N BAR 9962

GARDENS PRIMETIME #

R R TRAVELER 5204 #

CAR MISS 055 #

GREEN GARDEN SUSIE 1246 SI #

UT MISS 3987

GA R EXAMPLE 3204 #

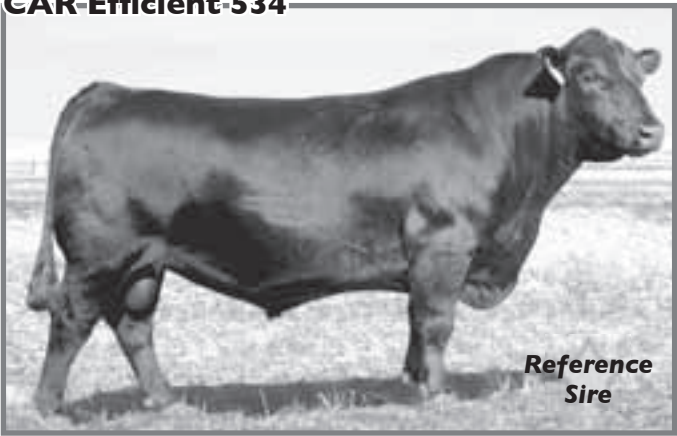
UT MISS 1416 #

Birth Wt
80205 Wt
692

CED	BW	WW	YW	Milk	Marb	REA
1+2	1+3.0	1+45	1+83	1+25	1+.27	1+.06
\$W	\$F	\$G	\$B			
27.87	25.10	14.18	47.33			

Embryo Transplant. 684 lb actual weaning weight

CAR-Efficient-534



Reference Sire

37

JVC EFFICIENT Y104

Bull + 17178137 tattoo Y104 calved 1/29/11

K C F BENNETT EFFICIENT
CAR EFFICIENT 534
 CAR MISS SUSIE 308 #

CONNEALY FOREFRONT #
 K C F BL MISS 5522 E152
 CAR DUKE 104 #
 CA R MISS TRENDY 449

N BAR EMULATION EXT #
G A R EXT 755 #
 GA R TRAVELER 2421

EMULATION N BAR 5522 #
 N BAR PRIMROSE 2424
 QA S TRAVELER 23-4 #
 GA R SCOTCH CAP 209

Birth Wt
82
205 Wt
540

CED	BW	WW	YW	Milk	Marb	REA
1+7	1+1.4	1+50	1+95	1+19	1+1.15	1+2.6
	\$W	\$F		\$G		\$B
	30.75	35.87		11.36		48.39

Embryo Transplant.

38

JVC EFFICIENT Y109

Bull + 17161265 tattoo Y109 calved 2/2/11

K C F BENNETT EFFICIENT
CAR EFFICIENT 534
 CAR MISS SUSIE 308 #

CONNEALY FOREFRONT #
 K C F BL MISS 5522 E152
 CAR DUKE 104 #
 CA R MISS TRENDY 449

N BAR EMULATION EXT #
G A R EXT 755 #
 GA R TRAVELER 2421

EMULATION N BAR 5522 #
 N BAR PRIMROSE 2424
 QA S TRAVELER 23-4 #
 GA R SCOTCH CAP 209

Birth Wt
82
205 Wt
455

CED	BW	WW	YW	Milk	Marb	REA
1+7	1+1.4	1+50	1+95	1+19	1+2.1	1+1.4
	\$W	\$F		\$G		\$B
	30.75	35.87		15.74		41.36

Embryo Transplant. 506 lb actual weaning weight



39 JVC EMULATION EXT

Bull + 17161119 tattoo Y107 calved 2/1/11

EMULATION N BAR 5522 #
N BAR EMULATION EXT #
 N BAR PRIMROSE 2424

D H D TRAVELER 6807 #
KMK DONNA J337
 BROOKS DONNA 319

EMULATION 31 #
 ANKONY 8F78 LASS 8F275
 EMULATION 31 #
 PRIMROSE N BAR 9962
 QA STRAVELER 23-4 #
 BEMINDFUL MAID D H D 0807 #
 RITO 9J9 OF B156 7T26 #
 AA R DONNA 1853 #

Birth Wt	78
205 Wt	623

CED	BW	WW	YW	Milk	Marb	REA
1+5	+0.7	+40	+71	+20	1+.12	1+.26
	\$W	\$F		\$G		\$B
	28.53	14.91		15.04		43.24

Embryo Transplant. 700 lb actual weaning weight

40 JVC EMULATION EXT Y125

Bull + 17161120 tattoo Y125 calved 2/22/11

EMULATION N BAR 5522 #
N BAR EMULATION EXT #
 N BAR PRIMROSE 2424

D H D TRAVELER 6807 #
KMK DONNA J337
 BROOKS DONNA 319

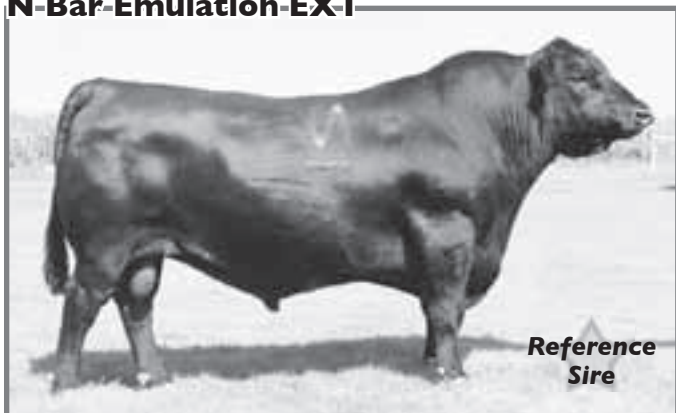
EMULATION 31 #
 ANKONY 8F78 LASS 8F275
 EMULATION 31 #
 PRIMROSE N BAR 9962
 QA STRAVELER 23-4 #
 BEMINDFUL MAID D H D 0807 #
 RITO 9J9 OF B156 7T26 #
 AA R DONNA 1853 #

Birth Wt	86
205 Wt	681

CED	BW	WW	YW	Milk	Marb	REA
1+5	+1.3	+41	+73	+20	1+.28	1+.28
	\$W	\$F		\$G		\$B
	28.09	16.50		20.89		53.65

Embryo Transplant. 726 lb actual weaning weight

N-Bar-Emulation-EXT





41 JVC HOOVER DAM Y106

Bull + 17178200 tattoo Y106 calved 2/1/11

SYDGEN C C & 7

HOOVER DAM

ERICA OF ELLSTON C124 #

BONVIEW NEW DESIGN 1407 #

RIVER HILLS EXT PRECSN R465

L C RASBURY PRECISION 124

SA F CONNECTION #
SYDGEN FOREVER LADY 4087

TC GRIDIRON 258 #
ERICA OF ELLSTON V65

B/R NEW DESIGN 036 #
BONVIEW PRIDE 664

GA R PRECISION 1680 #
GA R EXT 2104

Birth Wt	76
205 Wt	448

CED	BW	WW	YW	Milk	Marb	REA
I+10	+0.5	+34	+71	+32	I+.66	I+.74
	\$W	\$F		\$G		\$B
	24.38	17.21		40.37		63.45

Embryo Transplant. 500 lb actual weaning weight

42 JVC HOOVER DAM Y110

Bull + 17161348 tattoo Y110 calved 2/3/11

SYDGEN C C & 7

HOOVER DAM

ERICA OF ELLSTON C124 #

BONVIEW NEW DESIGN 1407 #

RIVER HILLS EXT PRECSN R465

L C RASBURY PRECISION 124

SA F CONNECTION #
SYDGEN FOREVER LADY 4087

TC GRIDIRON 258 #
ERICA OF ELLSTON V65

B/R NEW DESIGN 036 #
BONVIEW PRIDE 664

GA R PRECISION 1680 #
GA R EXT 2104

Birth Wt	86
205 Wt	652

CED	BW	WW	YW	Milk	Marb	REA
I+10	+1.0	+48	+93	+32	I+.64	I+.76
	\$W	\$F		\$G		\$B
	28.81	34.53		39.63		68.96

Embryo Transplant. 728 lb actual weaning weight

43 JVC HOOVER DAM Y112

Bull + 17161349 tattoo Y112 calved 2/6/11

SYDGEN C C & 7

HOOVER DAM

ERICA OF ELLSTON C124 #

BONVIEW NEW DESIGN 1407 #

RIVER HILLS EXT PRECSN R465

L C RASBURY PRECISION 124

SA F CONNECTION #
SYDGEN FOREVER LADY 4087

TC GRIDIRON 258 #
ERICA OF ELLSTON V65

B/R NEW DESIGN 036 #
BONVIEW PRIDE 664

GA R PRECISION 1680 #
GA R EXT 2104

Birth Wt	78
205 Wt	552

CED	BW	WW	YW	Milk	Marb	REA
I+10	I+0.9	I+44	I+86	I+32	I+.71	I+.62
	\$W	\$F		\$G		\$B
	29.17	28.66		42.28		54.77

Embryo Transplant. 612 lb actual weaning weight

Hoover-Dam



44

JVC HOOVER DAM Y120

Bull + 17161350 tattoo Y120 calved 2/17/11

SYDGEN C C & 7

HOOVER DAM

ERICA OF ELLSTON C124 #

BONVIEW NEW DESIGN 1407 #

RIVER HILLS EXT PRECSN R465

L C RASBURY PRECISION 124

SA F CONNECTION #
SYDGEN FOREVER LADY 4087

TC GRIDIRON 258 #
ERICA OF ELLSTON V65

B/R NEW DESIGN 036 #
BONVIEW PRIDE 664

GA R PRECISION 1680 #
GA R EXT 2104

Birth Wt	92
205 Wt	660

CED	BW	WW	YW	Milk	Marb	REA
I+10	+2.1	+50	+95	+32	I+.65	I+.78
	\$W	\$F		\$G		\$B
	27.86	35.87		40.25		71.65

Embryo Transplant. 712 lb actual weaning weight

45

JVC HOOVER DAM Y143

Bull + 17174361 tattoo Y143 calved 3/18/11

SYDGEN C C & 7

HOOVER DAM

ERICA OF ELLSTON C124 #

BONVIEW NEW DESIGN 1407 #

RIVER HILLS EXT PRECSN R465

L C RASBURY PRECISION 124

SA F CONNECTION #
SYDGEN FOREVER LADY 4087

TC GRIDIRON 258 #
ERICA OF ELLSTON V65

B/R NEW DESIGN 036 #
BONVIEW PRIDE 664

GA R PRECISION 1680 #
GA R EXT 2104

Birth Wt	72
205 Wt	441

CED	BW	WW	YW	Milk	Marb	REA
I+10	I+0.9	I+44	I+86	I+32	I+.66	I+.74
	\$W	\$F		\$G		\$B
	29.17	28.66		40.37		64.36

Embryo Transplant.

Sinclair-Lady-5ET-I-4465



**Reference
Dam**

Dam of Lots 45 - 47



46

46

JVC UPWARD Y12I

Bull + 17162444

tattoo Y12I

calved 2/17/11

CONNEALY ONWARD #

CONNEALY LEAD ON #

ALTUNE OF CONANGA 6104

SITZ UPWARD 307R #

SITZ VALUE 7097 #

SITZ HENRIETTA PRIDE 1370

N BAR EXPLOSION TNT #

N BAR EXPLOSION #

N BAR ENCHANTRESS U130

SINCLAIR LADY 5ET I 4465

IDEAL 4465 OF 6807 4286

D H D TRAVELER 6807 #

E E 4286 OF IDEAL 2240 1254

Birth Wt

76

205 Wt

609

CED	BW	WW	YW	Milk	Marb	REA
I+7	I+0.7	I+60	I+106	I+35	I+.30	I+.39
	\$W	\$F		\$G		\$B
	38.66	43.85		20.34		68.87

Embryo Transplant. 658 lb actual weaning weight

Sitz-Upward-307R



Reference Sire

47

JVC UPWARD Y124

Bull + 17162445 tattoo Y124 calved 2/20/11

CONNEALY ONWARD #
SITZ UPWARD 307R #
 SITZ HENRIETTA PRIDE 81M

CONNEALY LEAD ON #
 ALTUNE OF CONANGA 6104
 SITZ VALUE 7097 #
 SITZ HENRIETTA PRIDE 1370

N BAR EXPLOSION TNT #
SINCLAIR LADY SET I 4465
 IDEAL 4465 OF 6807 4286

N BAR EXPLOSION #
 N BAR ENCHANTRESS U130
 D H D TRAVELER 6807 #
 E E 4286 OF IDEAL 2240 1254

Birth Wt	80
205 Wt	695

CED	BW	WW	YW	Milk	Marb	REA
I+7	I+0.7	I+60	I+106	I+35	I+.32	I+.34
	\$W	\$F		\$G		\$B
	38.66	43.85		25.05		64.47

Embryo Transplant. 746 lb actual weaning weight

48

JVC UPWARD Y140

Bull + 17162446 tattoo Y140 calved 3/2/11

CONNEALY ONWARD #
SITZ UPWARD 307R #
 SITZ HENRIETTA PRIDE 81M

CONNEALY LEAD ON #
 ALTUNE OF CONANGA 6104
 SITZ VALUE 7097 #
 SITZ HENRIETTA PRIDE 1370

N BAR EXPLOSION TNT #
SINCLAIR LADY SET I 4465
 IDEAL 4465 OF 6807 4286

N BAR EXPLOSION #
 N BAR ENCHANTRESS U130
 D H D TRAVELER 6807 #
 E E 4286 OF IDEAL 2240 1254

Birth Wt	84
205 Wt	716

CED	BW	WW	YW	Milk	Marb	REA
I+7	I+0.7	I+60	I+106	I+35	I+.33	I+.52
	\$W	\$F		\$G		\$B
	38.66	43.85		22.12		72.66

Embryo Transplant. 746 lb actual weaning weight

Sitz-Henrietta-Pride-1510



**Reference
Dam**

Dam of Lots 49 and 50

The famous Jocko Valley foundation female who originally sold as the pick of her entire heifer calf crop at Sitz Angus Ranch in Montana as the \$101,000 one-time world record-selling Angus Foundation female at the National Western Stock Show to Falcon Seaboard Ranches. This outstanding daughter of the legendary Pathfinder Sire Traveler 124 GDAR earned an individual IMF ratio of 130 and an individual ribeye ratio of 108 recording a progeny IMF ratio of 102 on 44 head while combining a progeny birth ratio of 99 with a progeny weaning ratio of 101 on three natural calves.

The famous dam of this cow set a new breed record when she sold for \$250,000 in the record-setting 1999 Sitz Elite Cow Sale and she records progeny weaning and yearling ratios of 109 and 112, respectively, on seven natural calves.

49

JVC MONEymAKER Y126

Bull + 17161245 tattoo Y126 calved 2/22/11

BOYD ON TARGET 1083 #

SA F 598 BANDO 5175 #
BOYD FOREVER LADY 7095

STEVENSON MONEymAKER R185

STEVENSON CLOVA PRIDE L888 #

VDAR AMBUSH 2478
STEVENSON CLOVA PRIDE 712H

TRAVELER 124 G D A R #

SITZ HENRIETTA PRIDE 1510

SITZ HENRIETTA PRIDE 501

QA STRAVELER 23-4 #
RACHEL RITO 813 G D A R

G D A R RAINMAKER 340 #
SITZ HENRIETTA PRIDE 1219

Birth Wt

80

205 Wt

666

CED	BW	WW	YW	Milk	Marb	REA
1+1	1+3.7	1+46	1+87	1+16	1+.36	1-.04
	\$W	\$F	\$G	\$B		
	19.28	28.90	22.24	39.59		

Embryo Transplant. 710 lb actual weaning weight

Stevenson-Moneymaker-R185



**Reference
Sire**

50**JVC MONEYMAKER Y135**

Bull + 17161246

tattoo Y135

calved 2/25/11

BOYD ON TARGET 1083 #

S A F 598 BANDO 5175 #

BOYD FOREVER LADY 7095

STEVENSON MONEYMAKER R185

STEVENSON CLOVA PRIDE L888 #

VDAR AMBUSH 2478

STEVENSON CLOVA PRIDE 712H

TRAVELER 124 G D A R #

Q A S TRAVELER 23-4 #

RACHEL RITO 813 G D A R

SITZ HENRIETTA PRIDE 1510

SITZ HENRIETTA PRIDE 501

G D A R RAINMAKER 340 #

SITZ HENRIETTA PRIDE 1219

Birth Wt

86

205 Wt

687

CED	BW	WW	YW	Milk	Marb	REA
I+1	I+3.7	I+46	I+87	I+16	I+.31	I+.03
\$W	\$F	\$G	\$B			
19.28	28.90	18.97	47.05			

Embryo Transplant. 726 lb actual weaning weight**51****JVC BEXTOR Y118**

Bull + 17178903

tattoo Y118

calved 2/16/11

B A R EXT TRAVELER 205 #

N BAR EMULATION EXT #

B A R QUEEN TRAVELER 3015 #

C R A BEXTOR 872 5205 608 #

CRA LADY JAYE 608 498 S EASY

G A R SLEEP EASY 1009 #

H H F 917 LADY 975 498

G A R GRID MAKER #

G D A R TRAVELER 044 #

G A R PRECISION 2536

SOUTHERN PRIMROSE 4321 5051

TWIN VALLEY MISSIE 4321

BONVIEW NEW DESIGN 1407 #

TWIN VALLEY PRIMROSE 1438

Birth Wt

82

205 Wt

533

CED	BW	WW	YW	Milk	Marb	REA
na	+1.8	+42	+84	+25	I+.48	I+.66
\$W	\$F	\$G	\$B			
23.95	27.37	38.23	44.16			

Embryo Transplant.

American Angus Association® Selection Tools

Calving Ease Direct (CED), is expressed as a difference in percentage of unassisted births, with a higher value indicating greater calving ease in first-calf heifers. It predicts the average difference in ease with which a sire's calves will be born when he is bred to first-calf heifers.

Birth Weight EPD (BW), expressed in pounds, is a predictor of a sire's ability to transmit birth weight to his progeny compared to that of other sires.

Weaning Weight EPD (WW), expressed in pounds, is a predictor of a sire's ability to transmit weaning growth to his progeny compared to that of other sires.

Yearling Weight EPD (YW), expressed in pounds, is a predictor of a sire's ability to transmit yearling growth to his progeny compared to that of other sires.

Maternal Milk EPD (Milk), is a predictor of a sire's genetic merit for milk and mothering ability as expressed in his daughters compared to daughters of other sires. In other words, it is that part of a calf's weaning weight attributed to milk and mothering ability.

Marbling EPD (Marb), expressed as a fraction of the difference in USDA marbling score of a sire's progeny compared to progeny of other sires.

Ribeye Area EPD (RE), expressed in square inches, is a predictor of the difference in ribeye area of a sire's progeny compared to progeny of other sires.

Weaned Calf Value (\$W), an index value expressed in dollars per head, is the expected average difference in future progeny performance for pre-weaning merit. \$W includes both revenue and cost adjustments associated with differences in birth weight, weaning direct growth, maternal milk, and mature cow size.

Feedlot Value (\$F), an index value expressed in dollars per head, is the expected average difference in future progeny performance for postweaning merit compared to progeny of other sires.

\$G combines both \$QG and \$YG, and may be the best carcass decision tool for focusing on quality and red meat yield simultaneously.

Beef Value (\$B), an index value expressed in dollars per head, is the expected average difference in future progeny performance for postweaning and carcass value compared to progeny of other sires.



Registered Angus First Calf Heifer Pairs

Cow sells with her heifer calf by her side

60

BHC RUBY 026

Cow 16738640

tattoo 026 calved 1/31/10

GT SHEAR FORCE

N BAR PRIMETIME D806 #

SUMMITCREST STARDOM 1S54

GT SISKIN 106 #

SUMMITCREST PRINCESS 0N70

BONVIEW NEW DESIGN 878 #
SUMMITCREST PRINCESS 2J10 #

SUMMITCREST PRIME CUT 1G42 #

FINKS 5522-6148 #

BASIN RUBY 726K #

SUMMITCREST BARBARA 0B74 #

BASIN RUBY G301 #

BASIN RAINMAKER 814Z #

BASIN RUBY 726Y

Birth Wt

68

205 Wt

718

CED	BW	WW	YW	Milk	Marb	REA
+8	+0.7	+44	+82	+28	1+.55	1-.07
\$W		\$F		\$G		\$B
30.35		24.47		21.83		45.30

60A tattoo 203 heifer calved 1/29/12
sire Coleman Regis 904

61

BLEVINS QUEEN FORESIGHT 0436

Cow 16831911

tattoo 0436 calved 3/11/10

WOODHILL FORESIGHT #

PAPA FORTE 1921 #

PL FORESIGHT T808

BONVIEW GAMMER 85

ICC BLACKCAP 3612

GA R PRECISION 1680 #
NER ICC BLACKCAP SF 0192

TWINVALLEY PRECISION E161 #

GA R PRECISION 1680 #

BLEVINS QUEEN PRECISION 3424

W C C BLACKCAP C9

BLEVINS QUEEN EXT TRAV 8014

BA R EXT TRAVELER 205 #
BLEVINS QUEEN 814Z 6019

Birth Wt

84

205 Wt

641

CED	BW	WW	YW	Milk	Marb	REA
+5	+2.1	+53	+96	+24	+3.5	+5.8
\$W		\$F		\$G		\$B
27.84		35.69		28.04		66.04

61A tattoo 229 heifer calved 2/16/12
sire Coleman Foundation 972

62

TALON BLACKBIRD 0628

Cow 16698958

tattoo 0628 calved 2/13/10

GA R PRECISION 1680 #

TEHAMA BANDO 155 #

G A R RETAIL PRODUCT #

9J9 GA R 856

GA R EXT 4927

N BAR EMULATION EXT #
GA R TRAVELER 641

STEVENSON STRUT L904

ROCKN DAMBUSH 1531 #

BASIN BLACKBIRD 628N

STEVENSON ERICA 7559

BASIN BLACKBIRD 4296

BASIN EMULATION 270D #
BASIN BLACKBIRD D921

Birth Wt

78

205 Wt

619

CED	BW	WW	YW	Milk	Marb	REA
+6	+1.2	+42	+80	+21	+5.3	+4.6
\$W		\$F		\$G		\$B
25.71		23.20		38.27		62.81

62A tattoo 1216 heifer calved 3/13/12
sire JVC Upwards 307R 0128 or GA F Powerstroke 2524

63**BLEVINS BLACKCAP 044I**

Cow 16831913 tattoo 044I calved 3/14/10

WOODHILL FORESIGHT #

PL FORESIGHT T808

ICC BLACKCAP 3612

PAPA FORTE 1921 #

BONVIEW GAMMER 85

GA R PRECISION 1680 #

NER ICC BLACKCAP SF 0192

BLEVINS RAINDANCE 2503

BLEVINS BLACKCAP RAIN 7238

BLEVINS EASY BLACKCAP 0056

GA R ENHANCER 5365 #

BLEVINS QUEEN 814Z 6019

SA F EASY FORTUNE #

BLEVINS BLACKCAP EXT 8020

Birth Wt
82205 Wt
568

CED	BW	WW	YW	Milk	Marb	REA
0	+3.3	+50	+90	+18	+40	+39
	\$W	\$F	\$G	\$B		
	23.29	30.45	28.28	58.13		

63A tattoo 24I heifer calved 2/29/12
sire Summitcrest Stardom 1S54**64****TALON MISS SPADE 050**

Cow 16698946 tattoo 050 calved 1/24/10

CONNEALY THUNDER

SITZ THUNDER 524U

SITZ BARBARAMERE NELL 93N #

BALDRIDGE KABOOM K243 KCF

PARKA OF CONANGA 241 #

SITZ ALLIANCE 9800 #

SITZ BARBARAMERE NELL 1180

ER ENTENSITY N550

TALON MISS SPADE 8050

TALON MISS SPADE 1050A

TWINVALLEY PRECISION E161 #

ER EVERELDA ENTENSE K218

SITZ ALLIANCE 6595 #

FELLMAN MISS SPADE 8151

Birth Wt
76205 Wt
707

CED	BW	WW	YW	Milk	Marb	REA
+2	+2.4	+49	+88	+27	+25	+29
	\$W	\$F	\$G	\$B		
	27.37	28.73	24.88	52.95		

64A tattoo 289 heifer calved 3/2/12
sire Hoover Dam**65****TALON FOREVER LADY 0710**

Cow 16698960 tattoo 0710 calved 2/8/10

CONNEALY THUNDER

SITZ THUNDER 524U

SITZ BARBARAMERE NELL 93N #

BALDRIDGE KABOOM K243 KCF

PARKA OF CONANGA 241 #

SITZ ALLIANCE 9800 #

SITZ BARBARAMERE NELL 1180

B/R NEW FRONTIER 095 #

TALON FOREVER LADY 710

BALDRIDGE FOREVER LADY L513

B/R NEW DESIGN 036 #

WHITE FENCE PRIDE HI

FINKS 5522-6148 #

BALDRIDGE FOREVER LADY 731F

Birth Wt
77205 Wt
699

CED	BW	WW	YW	Milk	Marb	REA
+6	+0.9	+49	+87	+26	+46	+37
	\$W	\$F	\$G	\$B		
	30.41	27.67	30.40	62.10		

65A tattoo 268 heifer calved 2/23/12
sire JVC Upwards 307R 0128 or GA F Powerstroke 2524**66****TALON BLACKBIRD 0713**

Cow 16698961 tattoo 0713 calved 2/8/10

SITZ NEW DESIGN 458N

SITZ BULL DURHAM 9506

SITZ EISA EVERGREEN 974

BONVIEW NEW DESIGN 1407 #

SITZ ELLUNAS ELITE 3308

SITZ RLS RAINMAKER 9782

SITZ EISA EVERGREEN 2261

ER ENTENSITY N550

TALON BLACKBIRD 713

RIVERBEND BLACKBIRD 2023

TWINVALLEY PRECISION E161 #

ER EVERELDA ENTENSE K218

B C C BUSHWACKER 41-93 #

RIVERBEND BLACKBIRD 920

Birth Wt
70205 Wt
663

CED	BW	WW	YW	Milk	Marb	REA
+8	+1.4	+55	+101	+21	+54	+17
	\$W	\$F	\$G	\$B		
	28.41	40.38	26.49	58.26		

66A tattoo 236 heifer calved 2/8/12
sire Hoover Dam

67 PINE COULEE BLACKBRD LDY X05

Cow 16678174 tattoo X05 calved 1/25/10

O C C EMBLAZON 854E #

GARRET'S NATIONWIDE 8001

BOYD FOREVER LADY 8003

D H D TRAVELER 6807 #
DIXIE ERICA OF C H 1019
A A R NEW TREND #
S V F FOREVER LADY 57D

LRA ALLIANCE 459

B5 BLACKBIRD LADY 274

RICE BLACKBIRD LADY 902

SITZ ALLIANCE 6595 #
N T PRINCESS L R A 250 #
B/R NEW DESIGN 036 #
RICE BLACKBIRD LADY 742

Birth Wt
89
205 Wt
624

CED	BW	WW	YW	Milk	Marb	REA
-1	+4.7	+47	+78	+19	+1.30	+1.46
	\$W	\$F	\$G	\$B		
	22.15	19.18	24.37	51.73		

67A tattoo 226 heifer calved 2/5/12
sire Summitcrest Stardom 1S54

68 JC BARBARAMERE NELLE 35X

Cow 16659296 tattoo 35X calved 2/22/10

CAR DUKE 543

PINE COULEE DUKE T707

B5 KINANNIE 582

CAR DUKE 104 #
CAR MISS CAROLINE 3113
B A R EXT TRAVELER 205 #
B5 KINANNIE 270

BT HIGH PRIME 919P

JC BARBARAMERE NELLE 14U

BT BARBARAMERE NELLE 538J

SUMMITCREST HIGH PRIME 0H29
BT WINSOME WITCH 454J
TOP SECRET 9757 E A R
BT BARBARAMERE NELLE 2E

Birth Wt
72
205 Wt

CED	BW	WW	YW	Milk	Marb	REA
1+3	1+2.2	1+43	1+73	1+20	na	na
	\$W	\$F	\$G	\$B		
	27.01	15.74	na	na		

68A tattoo 209 heifer calved 2/1/12
sire Jocko Valley Focus 8101

69 ICC BLACKBIRD 0746

Cow + 16816885 tattoo 0746 calved 3/7/10

SYDGEN C C & 7

HOOVER DAM

ERICA OF ELLSTON C124 #

S A F CONNECTION #
SYDGEN FOREVER LADY 4087
T C GRIDIRON 258 #
ERICA OF ELLSTON V65

SITZ TRAVELER 8180 #

M A R BLACKBIRD 8067 #

JOLLY R BLACKBIRD 184A

G D A R TRAVELER 71 #
SITZ EVERELDA ENTENSE 1137
WOODHILL SCOTCHMAN
BLACKBIRD OF R R 5304 #

Birth Wt
205 Wt

CED	BW	WW	YW	Milk	Marb	REA
1+11	1+0.0	1+44	1+86	1+29	1+4.6	1+6.3
	\$W	\$F	\$G	\$B		
	32.08	28.66	30.39	60.37		

69A tattoo 1217 heifer calved 3/13/12
sire JVC Upwards 307R 0128 or G A F Powerstroke 2524



**Commercial
Pairs**

Cow sells with her calf at side

70

Cow

Commercial

COMMERCIAL PAIR

70A *commercial calf at side*

71

Cow

Commercial

COMMERCIAL PAIR

71A *commercial calf at side*

72

Cow

Commercial

COMMERCIAL PAIR

72A *commercial calf at side*

73

Cow

Commercial

COMMERCIAL PAIR

73A *commercial calf at side*

74

Cow

Commercial

COMMERCIAL PAIR

74A *commercial calf at side*

75

Cow

Commercial

COMMERCIAL PAIR

75A *commercial calf at side*

76

Cow

Commercial

COMMERCIAL PAIR

76A *commercial calf at side*

77

Cow

Commercial

COMMERCIAL PAIR

77A *commercial calf at side*

78

Cow

Commercial

COMMERCIAL PAIR

78A *commercial calf at side*

79

Cow

Commercial

COMMERCIAL PAIR

79A *commercial calf at side*



Jocko Valley Bull Sale

Saturday • April 14, 2012 • 1:00 pm
Missoula Livestock Auction • Missoula, Montana

First Class
US Postage
Paid
Permit No. 6
Hobson, MT



32526 McLeod Road
Arlee, MT 59821